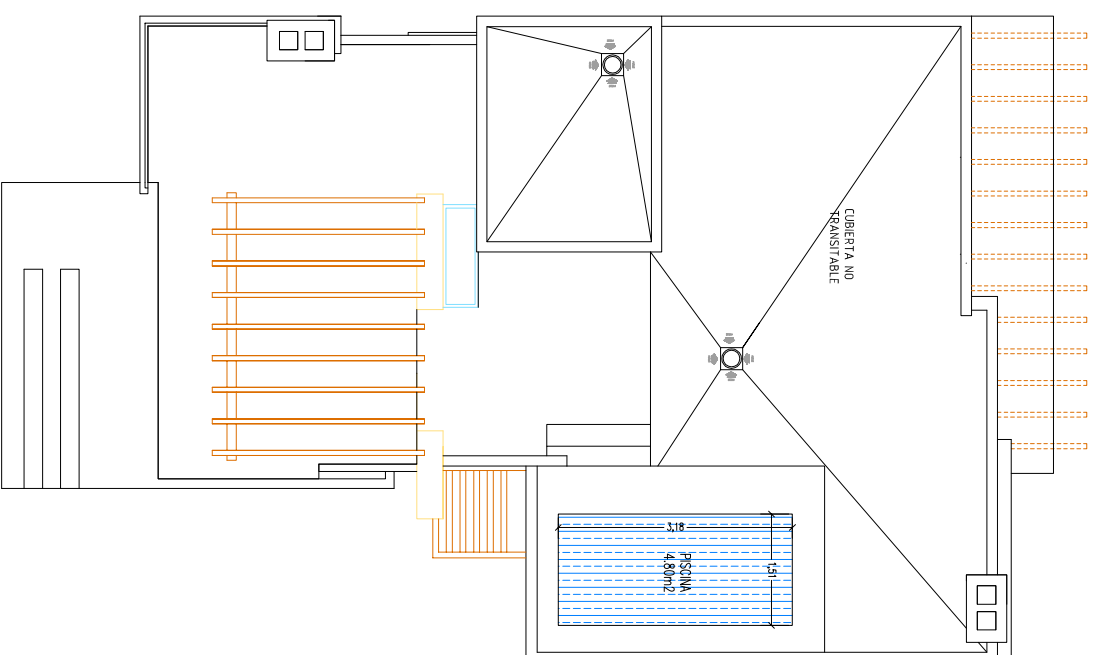
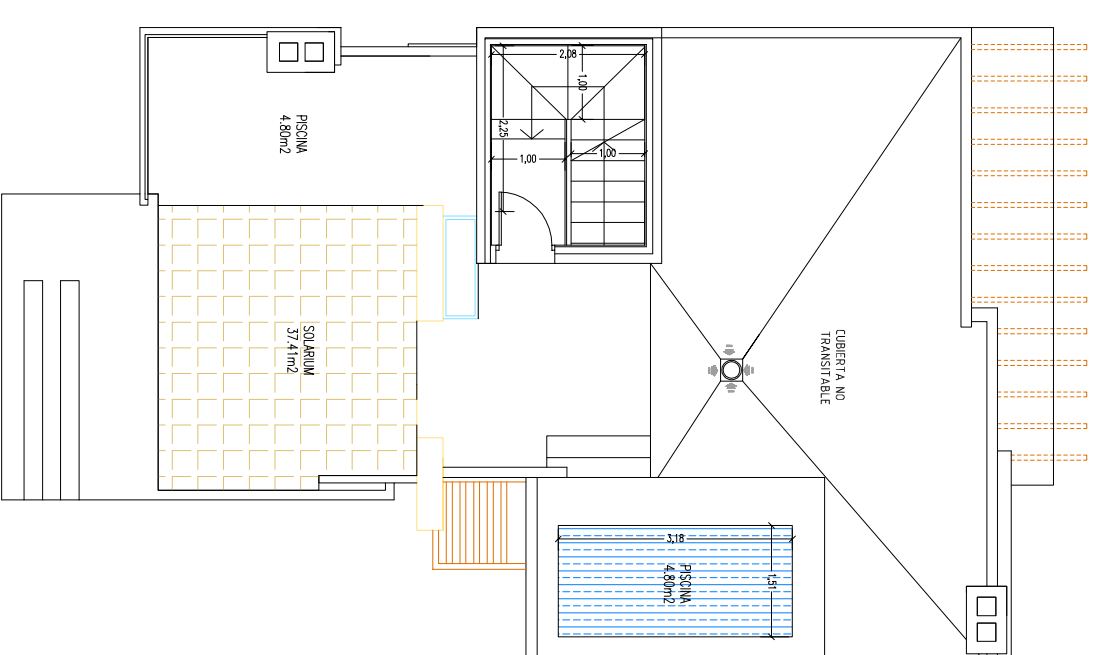


PLANTA SOTANO



PLANTA CUBIERTAS

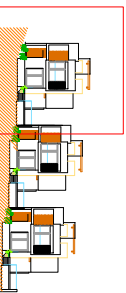


PLANTA CASETONES

CUADRO SUPERFICIES

PLANTA SOTANO		PLANTA CUBIERTAS		PLANTA CASETONES		TOTAL	
AREA-BODEGA	63,03m ²	SITIO	7,14m ²	DOMINIO 1	13,36m ²	AREA	27m ²
		DOMINIO 2	12,56m ²	DOMINIO 3	10,26m ²	AREA	36m ²
		SALON-COM	11,76m ²	BAÑO 1	4,24m ²	AREA	11,76m ²
		BAÑO 2	4,24m ²	REPERICION	7,24m ²	AREA	15,72m ²
		AREA 2	15,72m ²	AREA 2	15,72m ²	AREA	31,44m ²
		AREA 3	15,72m ²	AREA 3	15,72m ²	AREA	31,44m ²
		AREA 4	15,72m ²	AREA 4	15,72m ²	AREA	31,44m ²
		AREA 5	15,72m ²	AREA 5	15,72m ²	AREA	31,44m ²
		AREA 6	15,72m ²	AREA 6	15,72m ²	AREA	31,44m ²
		AREA 7	15,72m ²	AREA 7	15,72m ²	AREA	31,44m ²
		AREA 8	15,72m ²	AREA 8	15,72m ²	AREA	31,44m ²
		AREA 9	15,72m ²	AREA 9	15,72m ²	AREA	31,44m ²
		AREA 10	15,72m ²	AREA 10	15,72m ²	AREA	31,44m ²
		AREA 11	15,72m ²	AREA 11	15,72m ²	AREA	31,44m ²
		AREA 12	15,72m ²	AREA 12	15,72m ²	AREA	31,44m ²
		AREA 13	15,72m ²	AREA 13	15,72m ²	AREA	31,44m ²
		AREA 14	15,72m ²	AREA 14	15,72m ²	AREA	31,44m ²
		AREA 15	15,72m ²	AREA 15	15,72m ²	AREA	31,44m ²
		AREA 16	15,72m ²	AREA 16	15,72m ²	AREA	31,44m ²
		AREA 17	15,72m ²	AREA 17	15,72m ²	AREA	31,44m ²
		AREA 18	15,72m ²	AREA 18	15,72m ²	AREA	31,44m ²
		AREA 19	15,72m ²	AREA 19	15,72m ²	AREA	31,44m ²
		AREA 20	15,72m ²	AREA 20	15,72m ²	AREA	31,44m ²
		AREA 21	15,72m ²	AREA 21	15,72m ²	AREA	31,44m ²
		AREA 22	15,72m ²	AREA 22	15,72m ²	AREA	31,44m ²
		AREA 23	15,72m ²	AREA 23	15,72m ²	AREA	31,44m ²
		AREA 24	15,72m ²	AREA 24	15,72m ²	AREA	31,44m ²
		AREA 25	15,72m ²	AREA 25	15,72m ²	AREA	31,44m ²
		AREA 26	15,72m ²	AREA 26	15,72m ²	AREA	31,44m ²
		AREA 27	15,72m ²	AREA 27	15,72m ²	AREA	31,44m ²
		AREA 28	15,72m ²	AREA 28	15,72m ²	AREA	31,44m ²
		AREA 29	15,72m ²	AREA 29	15,72m ²	AREA	31,44m ²
		AREA 30	15,72m ²	AREA 30	15,72m ²	AREA	31,44m ²

AJALVIR 23
PARCELA 1



La distribución y amueblamiento de cada planta considero orientable.
Los interiores tiene carácter orientable y pueden ser modificados por la dirección Facultativa por motivos técnicos, comerciales o urbanísticos sin afectar menoscabo de la calidad.